



### Technical Features



RAL 9016 standard Stainless steel Other colors on request

Range  
Up to 4,2 m

Heating types  
**Heat Pump**  
**Gas R32 / R410a**

Casing  
**Galvanised Steel**  
**Self-Supporting**

Airflow / Length  
**1640 - 5840 m³/h**  
**1m to 3m**

Heating capacity  
**8 - 27 kW**

Grille type  
**Micro-perforated with pre-filter included**

Fans  
**Centrifugal**  
**5-speed**

Control  
**Plug&Play Advanced PRO**  
**+ IR remote control**

Outlet vanes  
**Aluminium, airfoil type**  
**Adjustable 0-15° each side**

WINDBOX DX air curtain for heat pump SAMSUNG.

Energy saving heat pump air curtain: Up to 70% reduction in costs and CO2 emissions (heating mode).

Self-supporting casing construction made of galvanized steel plate, finished in structural epoxy-polyester painting white colour RAL9016 as standard. Other colours or stainless steel are available on request.

Micro-perforated inlet grille with filter functions and easy service. Internal prefilter included.

Anodized aluminium outlet vanes, airfoil shaped, adjustable from 0 to 15° each side.

Low noise double-inlet centrifugal fans with external rotor motor. 5-speed controller. EC models assembled with very low consumption efficiency fans.

Includes only heating direct expansion coil with installed temperature sensors. Under request it can be modified to work in cooling and heating mode (not recommended) with optional condensate water pump.

Advanced Plug&Play control. Includes: Advanced PRO control with LCD display and integrated thermostat, door contact, 7m RJ11 cable and remote control.

DX VRF: Ready to connect to SAMSUNG CAC outdoor heat pump unit (R410A).

Requires SAMSUNG DX Interface KIT adapted for air curtain and programmable control, please consult.

#### AIR CURTAIN SPECIFICATIONS

Model	Airflow m³/h	Ventilation power 230V-50/60Hz kW	Ventilation current 230V-50/60Hz A	Outdoor unit (*) 230Vx1	Outdoor unit (*) 400Vx3	Pipes gas-liquid inch	Noise level (5 m) dB(A)	Weight kg
ECM 1000 DX8-SA	1640	0,142	1,24	AC71RXADNG/EU	-	5/8" - 3/8"	56	35
ECM 1500 DX11-SA	2460	0,213	1,86	AC100RXADKG/EU	AC100RXADNG/EU	5/8" - 3/8"	57	53
ECM 2000 DX19-SA	3280	0,284	2,48	-	AC200KXAPNH/EU	3/4" - 3/8"	58	69
ECM 2500 DX21-SA	4100	0,355	3,10	-	AC200KXAPNH/EU	3/4" - 3/8"	59	86
ECM 2500 DX24-SA	4100	0,355	3,10	-	AC250KXAPNH/EU	7/8" - 3/8"	59	86
ECM 3000 DX26-SA	4920	0,426	3,72	-	AC250KXAPNH/EU	7/8" - 3/8"	60	103
ECG 1500 DX13-SA	2920	0,284	2,48	AC120RXADKG/EU	AC120RXADNG/EU	5/8" - 3/8"	62	59
ECG 2000 DX23-SA	4380	0,426	3,72	-	AC200KXAPNH/EU	3/4" - 3/8"	63	92
ECG 2500 DX25-SA	5110	0,497	4,34	-	AC250KXAPNH/EU	7/8" - 3/8"	64	96
ECG 3000 DX27-SA	5840	0,568	4,96	-	AC250KXAPNH/EU	7/8" - 3/8"	65	109

(\*) Direct expansion valve inbuilt in the outdoor unit

#### OUTDOOR UNIT SPECIFICATIONS

Outdoor unit model (*)	Heating capacity kW	COP o SCOP	Cooling capacity kW	EER o SEER	Power supply	Pipes gas-liquid inch	Pipes minimum - maximum length m	Pipes maximum height m
AC71RXADNG/EU	8	3,20	6,8	2,93	230Vx1	5/8" - 3/8"	5 - 50	30
AC100RXADKG/EU	11,2	3,20	10	2,90	230Vx1	5/8" - 3/8"	5 - 50	30
AC100RXADNG/EU	11,2	3,27	10	2,92	400Vx3	5/8" - 3/8"	5 - 50	30
AC120RXADKG/EU	13,2	3,42	12	2,66	230Vx1	5/8" - 3/8"	5 - 50	30
AC120RXADNG/EU	13,2	3,48	12	2,67	400Vx3	5/8" - 3/8"	5 - 50	30
AC200KXAPNH/EU	23	3,45	20	3,10	400Vx3	3/4" - 3/8"	5 - 75	30
AC250KXAPNH/EU	27	3,24	25	2,61	400Vx3	7/8" - 3/8"	5 - 75	30

Energy efficiency: SCOP/SEER seasonal ≤12kW, COP/EER >12kW.

Outdoor unit capacities depending on standard conditions: heating 20°CDB indoor / 7°CDB and 6°CWB outdoor, cooling 27°CDB and 19°CWB indoor / 35°CDB outdoor.


When adverse weather conditions, the outdoor unit capacity can decrease. It is recommendable to oversize the units.


(\*) Outdoor units with R32 gas: ACxxxRXADNG/EU y ACxxxRXADKG/EU. Outdoor units with R410A gas: AC200KXAPNH/EU y AC250KXAPNH/EU.



### Technical Features



  
Range  
Up to 4,2 m

  
Heating types  
**Heat Pump**  
**Gas R410a**

  
Casing  
**Galvanised Steel**  
**Self-Supporting**


  
Airflow / Length  
**1640 - 5840 m³/h**  
**1m to 3m**

  
Heating capacity  
**8 - 34 kW**

  
Grille type  
**Micro-perforated with**  
**pre-filter included**

  
Fans  
**Centrifugal**  
**5-speed**

  
Control  
**Plug&Play Advanced PRO**  
**+ IR remote control**

  
Outlet vanes  
**Aluminium, airfoil type**  
**Adjustable 0-15° each side**

WINDBOX VRF air curtain for heat pump SAMSUNG.

Energy saving heat pump air curtain: Up to 70% reduction in costs and CO2 emissions (heating mode).

Self-supporting casing construction made of galvanized steel plate, finished in structural epoxy-polyester painting white colour RAL9016 as standard. Other colours or stainless steel are available on request.

Micro-perforated inlet grille with filter functions and easy service. Internal prefilter included.

Anodized aluminium outlet vanes, airfoil shaped, adjustable from 0 to 15° each side.

Low noise double-inlet centrifugal fans with external rotor motor. 5-speed controller. EC models assembled with very low consumption efficiency fans.

Includes only heating direct expansion coil with installed temperature sensors. Under request it can be modified to work in cooling and heating mode (not recommended) with optional condensate water pump.

Advanced Plug&Play control. Includes: Advanced PRO control with LCD display and integrated thermostat, door contact, 7m RJ11 cable and remote control.

DX VRF: Ready to connect to SAMSUNG VRF outdoor heat pump unit (R410A), not included, the customer should purchase it.

Requires SAMSUNG VRF Interface KIT adapted for air curtain with expansion valve and programmable control, please consult.

#### AIR CURTAIN SPECIFICATIONS

Model	Airflow m³/h	Ventilation power 230V-50/60Hz kW	Ventilation current 230V-50/60Hz A	Kit (*)	Pipes gas-liquid inch	Noise level (5 m) dB(A)	Weight kg
ECM 1000 VRF8-SA	1640	0,142	1,24	MXD-K025AN	5/8" – 3/8"	56	35
ECM 1500 VRF13-SA	2460	0,213	1,86	MXD-K050AN	5/8" – 3/8"	57	53
ECM 2000 VRF16-SA	3280	0,284	2,48	MXD-K050AN	5/8" – 3/8"	58	69
ECM 2500 VRF24-SA	4100	0,355	3,10	MXD-K075AN	7/8" – 3/8"	59	86
ECM 3000 VRF26-SA	4920	0,426	3,72	MXD-K075AN	7/8" – 3/8"	60	103
ECM 3000 VRF30-SA	4920	0,426	3,72	MXD-K100AN	7/8" – 3/8"	60	103
ECG 1000 VRF10-SA	2190	0,213	1,86	MXD-K025AN	5/8" – 3/8"	61	50
ECG 1500 VRF15-SA	2920	0,284	2,48	MXD-K050AN	5/8" – 3/8"	62	59
ECG 2000 VRF20-SA	4380	0,426	3,72	MXD-K050AN	3/4" – 3/8"	63	92
ECG 2000 VRF24-SA	4380	0,426	3,72	MXD-K075AN	7/8" – 3/8"	63	92
ECG 2500 VRF29-SA	5110	0,497	4,34	MXD-K075AN	7/8" – 3/8"	64	96
ECG 3000 VRF34-SA	5840	0,568	4,96	MXD-K100AN	7/8" – 3/8"	65	109

When adverse weather conditions, the outdoor unit capacity can decrease. It is recommendable to oversize the units.

(\*) Direct expansion valve included with the kit.

The VRF-compatible models are as follows:

- DVM S
- DVM S Eco

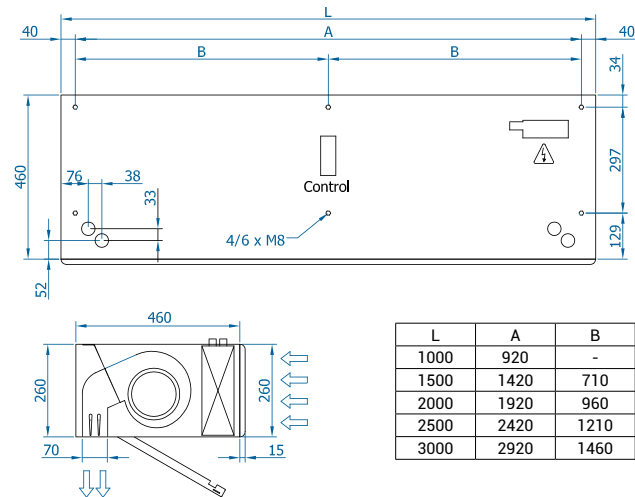


Selection program

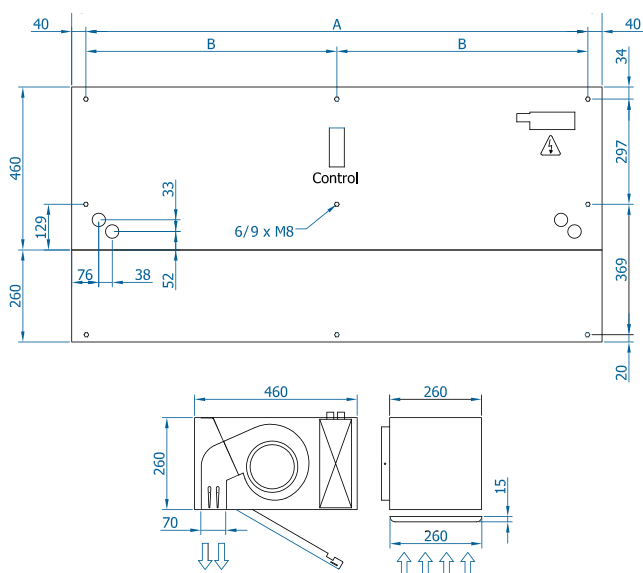


Dimensions

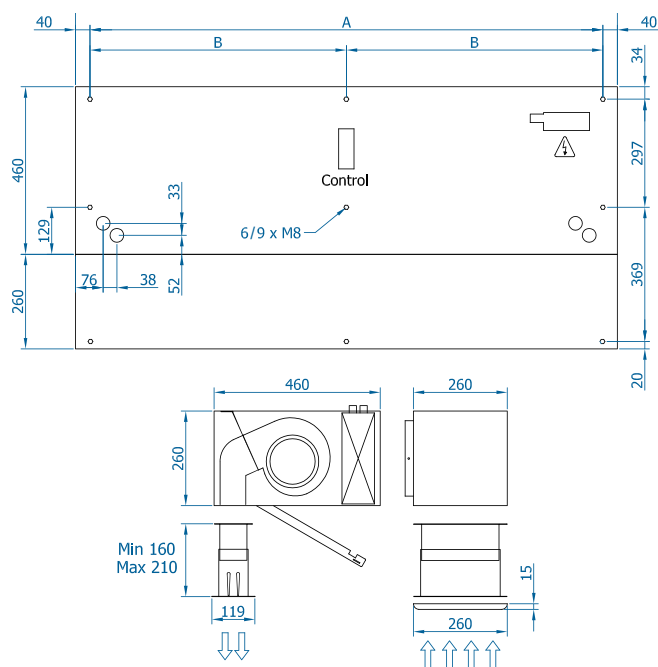
Horizontal free hanging Installation



Inside ceiling surface mounting



False ceiling invisible mounting

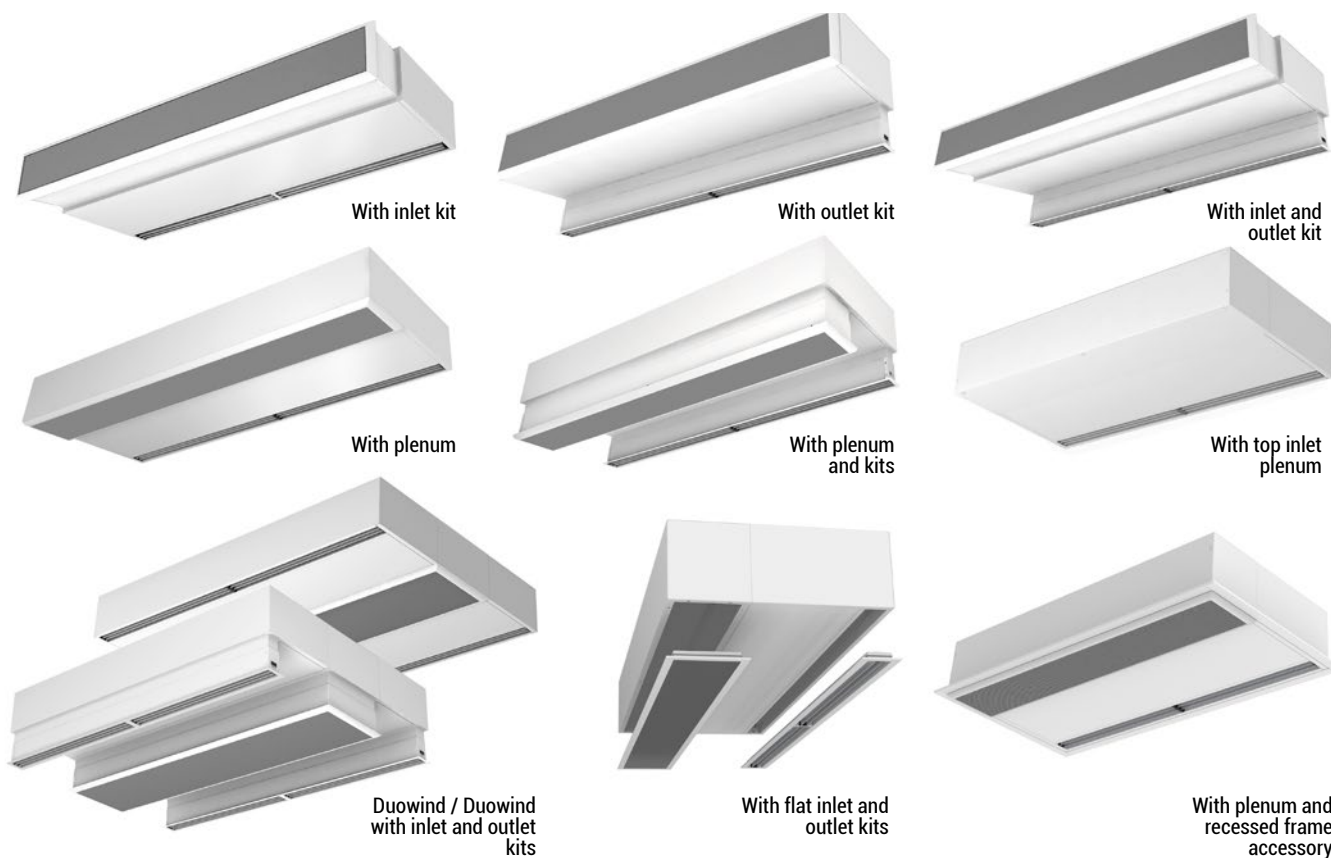


CAD drawings, BIM files, installation manuals and other documents





## Installation configurations



## Accessories

### Supports and installation



Wall rail support  
SPWR



Silentblock supports  
SPANG-SIL / SLB



Gripple hanger  
SPCT

### Control



ADVANCED PRO  
✓ Included



IR Control  
✓ Included



RJ11 Cable  
✓ Included

### Sensors and valves



Magnetic door contact  
DC  
✓ Included



Mechanical door contact  
DC



Condensate water pump  
for DX air curtains